



## Other Contests You Can Enter!

Various study abroad and travel magazines listed below hold yearly photo contests, too. They invite study abroad students to submit photos.

If your photo places, you could win additional prizes plus publication in a travel magazine!

STUDENT PHOTOGRAPHIC SOCIETY  
NATIONAL GEOGRAPHIC TRAVELER

\*\*\*\*\*



## SUBMIT PHOTOS TO



JOHNSON & WALES UNIVERSITY  
STUDY ABROAD OFFICE



## PHOTO CONTEST



JOHNSON & WALES UNIVERSITY  
STUDY ABROAD OFFICE

Email:

studyabroad@jwu.edu

Facebook:

<http://www.facebook.com/jwustudyabroad>

Phone: 401-598-1406

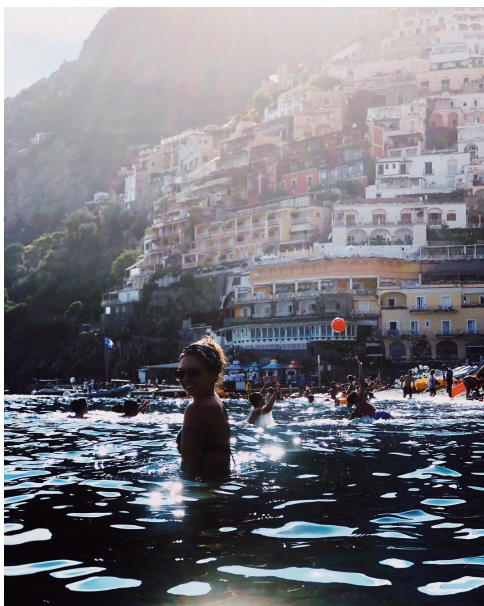
**Top Photo From Each  
Category:**

**\$100 PRIZE!**

**Deadline: September 20, 2019**

# PRIZE

1st Place  
**\$100 Prize!**



All photos also have a great chance of being used in Study Abroad and JWU publications!

Photo entries may be used in Study Abroad print publications as well as web site promotions for student recruitment. In addition, photos may be placed on display throughout Johnson & Wales University campuses.

Please be aware that photos submitted to Study Abroad are not returned to participants after submitted and become property of our office.

email: [studyabroad@jwu.edu](mailto:studyabroad@jwu.edu)

# RULES

- All entries must be received by 10:00 am **September 20, 2019** No late entries allowed.
- Two (2) photo entries maximum per participant.\*\*
- Color or black & white photos eligible.
- There are 4 categories to submit your photo to:
  - **Cultural**
  - **Landscape**
  - **Panoramic**
  - **JWU Spirit**
- Each photo must be submitted electronically to [studyabroad@jwu.edu](mailto:studyabroad@jwu.edu).
- Photos must be high resolution: cameras can be set to 300 pixels per inch; if the picture is under one megabyte, it's probably not high resolution and will not be printed.
- Each photo must have a written explanation of the photo. 100 words maximum per photo.
- Include the follow in the email:
  - Name & Campus
  - Photo Explanation & category
  - Program name & year
  - JWU email address

*We encourage you to be unique & creative!*

# RESULTS

After a week of voting on Facebook, the winner is the one with most "Likes".

Results will be confirmed on Facebook and via email to all participants by 4:00pm Friday, **September 27**.

# VOTING

'Like' favorite photo on our JWU Study Abroad Facebook page:

<http://www.facebook.com/jwustudyabroad>



Since 2010, Study Abroad has allowed students from all four campuses to vote for their favorite photo through our study abroad Facebook page! Faculty, staff, and students will also have the ability to view the photos and vote. *We ask that you only submit one vote per person.* To vote, visit our Facebook page and look through the Photo Contest 2018-2019 album. Simply open the picture and click 'like' under the photo that you want to win.

**One vote per person please!**

## \*\*ADDITIONAL OPPORTUNITY

You can submit other 'non-contest' photos of 'Iconic' subjects (landmarks, etc.) from your travel destinations for use by

JWU Design and Editorial Services

Make sure you indicate which photos are for the contest.